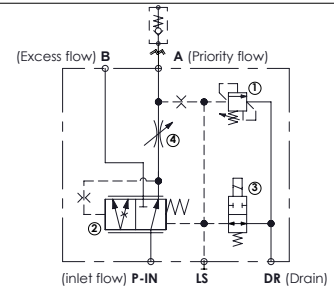
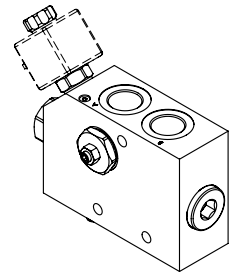
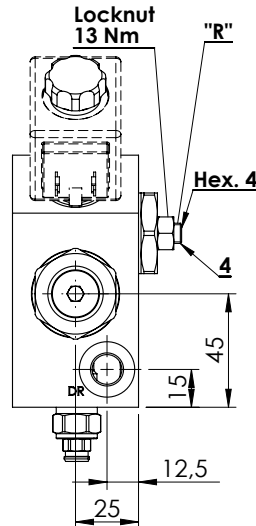
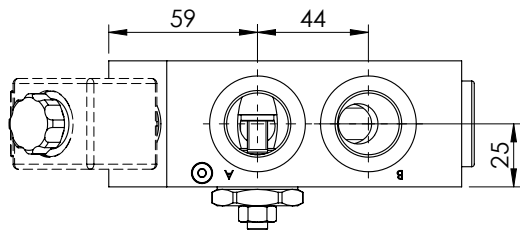
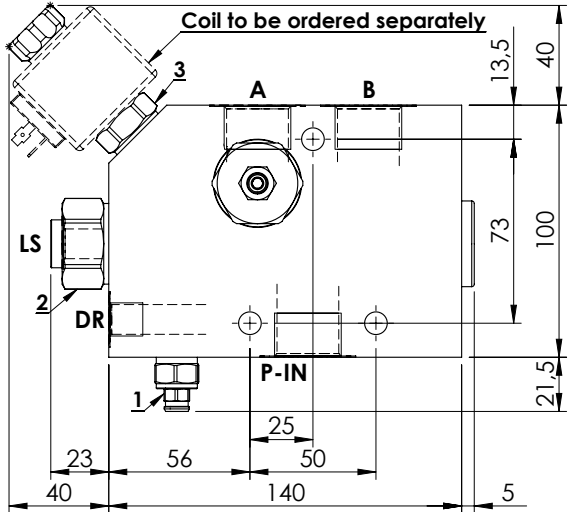
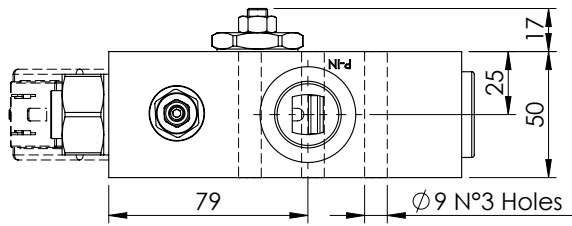


FLOW REGULATOR

MFPT-200-MHAR

PRESSURE COMPENSATED PRIORITY FLOW REGULATOR FOR AUXILIARY CIRCUITS

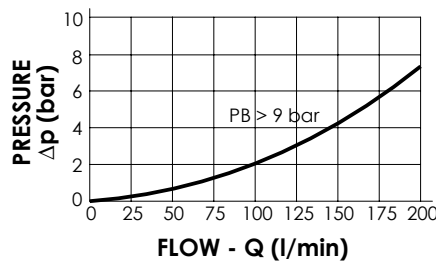
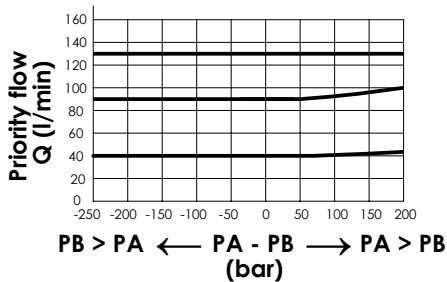


SPECIFICATIONS

| | |
|--------------------------|-------------------|
| Max. operating pressure: | 350 bar |
| Rated flow: | 200 l/min |
| Regulated Flow: | 1,5 - 140 l/min |
| Manifold: | Zinc plated steel |
| Weight: | 4,9 kg |
| Coil: | M7 type |

NOTES

- Turn screw "R" anti-clockwise to increase regulated flow.
- Drain flow when de-energized 2 l/min.
- Max back pressure admitted on "DR" line 1,5 bar.
- For correct operation 8-9 bar must be present in port A. For open centre or low pressure systems a 9 bar check valve should be fitted in port A.
- Spool switching can be influenced by flexing or stressing the valve body. It is recommended to fit spacers on the mounting bolts between the valve and the mounting surface.
- See pag. 61 for suitable check valves.



ORDERING CODES

| Quick code | Description | Main ports size | Setting range (bar) | Standard setting (bar) | Adjustment (bar/turn) |
|------------|---------------------------|------------------------------------|---------------------|------------------------|-----------------------|
| MF000055 | MFPT-200-MHAR-14-G34-N210 | P-IN, A,B: G 3/4" DR,LS: G 1/4" | 100 - 200 | 200 | 75 |
| MF000056 | MFPT-200-MHAR-14-G34-N350 | P-IN, A,B: G 3/4" DR,LS: G 1/4" | 150 - 350 | 350 | 165 |
| | | | | | |
| | | | | | |
| | | | | | |