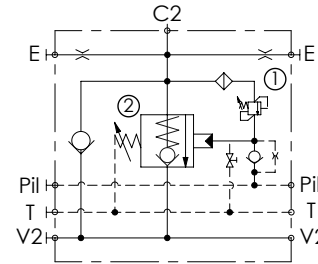
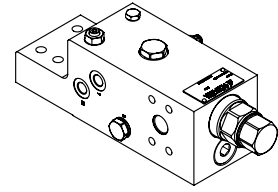
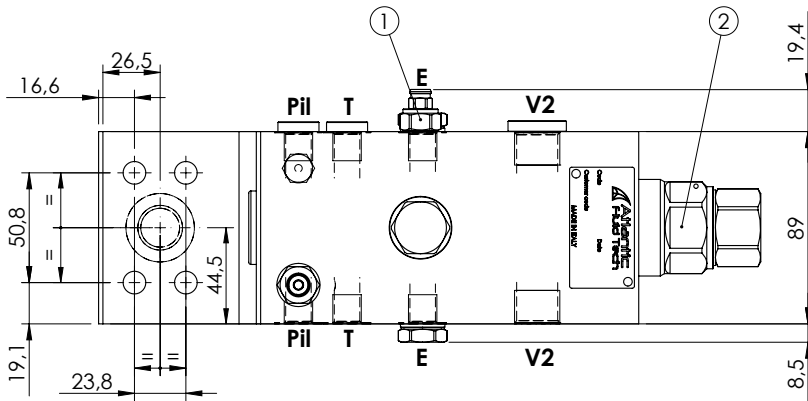
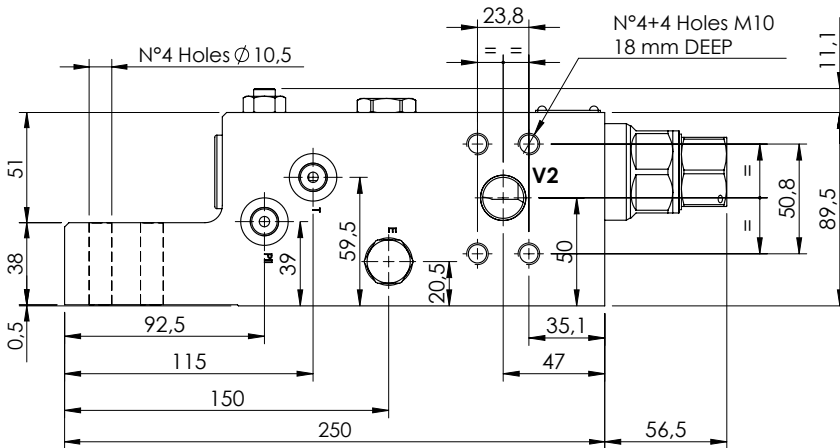


**CHECK AND METERING VALVE**

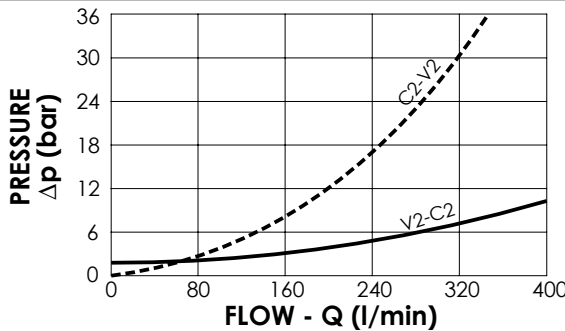
**MLLT-300-AAGR**

**FLANGED TYPE  
3/4" SAE 6000**



**SPECIFICATIONS**

<b>Max. operating pressure:</b>	<b>420 bar</b>
<b>Rated flow:</b>	<b>350 l/min</b>
<b>Manifold:</b>	<b>Steel</b>
<b>Weight:</b>	<b>12,2 kg</b>



**NOTES**

When correctly adjusted for the specific excavator installation, these valves meet the requirement of ISO 8643

**ORDERING CODES**

Quick code	Description	Main ports size	Standard setting (bar)	Adjust. range (bar)	Pressure increase (bar/turn)
ML000106	MLLT-300-AAGR-00-S34-N420	V2,C2: 3/4" SAE 6000 E,P11,T: G 1/4"	① 350 Q=5 l/min ② 7.5 Crack. pr.	① 150-460 ② 3-15	① 236 ② 3.4
ML000115	MLLT-300-AAJR-00-S34-N420	V2,C2: 3/4" SAE 6000 E,P11,T: 1/4" JIS	① 350 Q=5 l/min ② 7.5 Crack. pr.	① 150-460 ② 3-15	① 236 ② 3.4