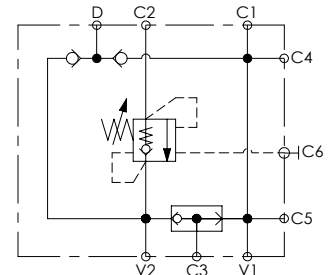
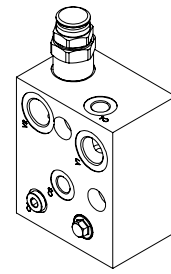
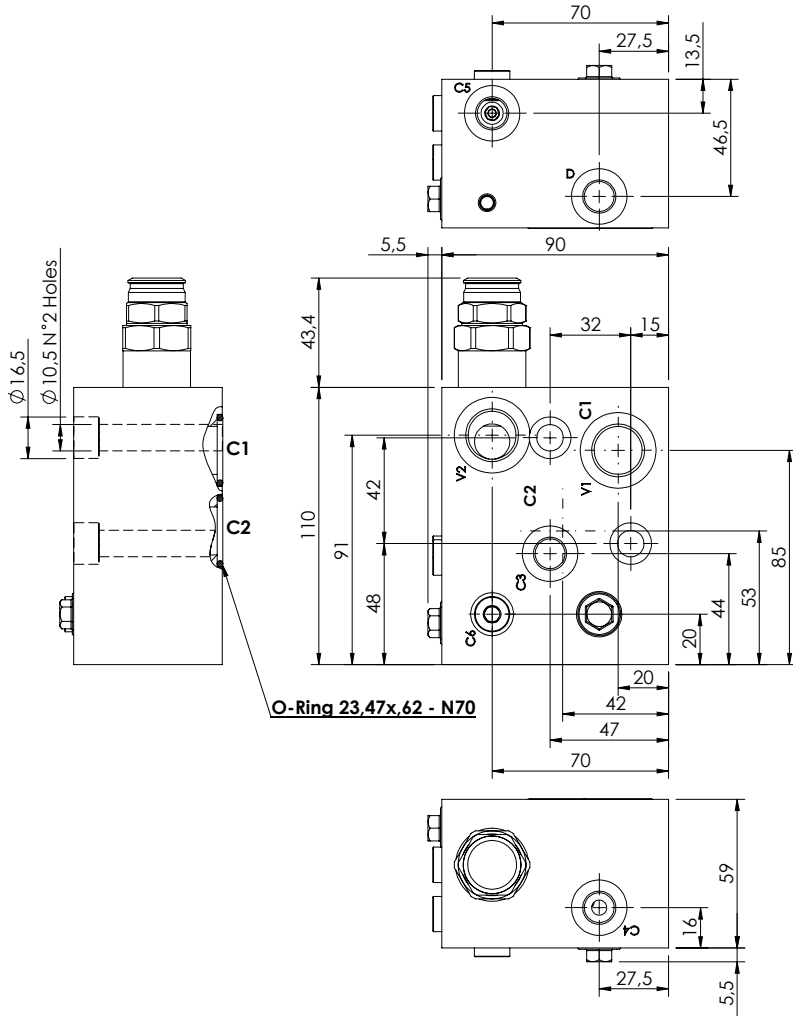


VALVES FOR WINCHES

**MBSN-100-ZMSF**

**PILOT ASSISTED  
OVERCENTRE**



**SPECIFICATIONS**

Max. operating pressure:	350 bar
Rated flow:	100 l/min
Manifold:	Aluminum
Weight:	1,61 kg

**SEALING CAP**

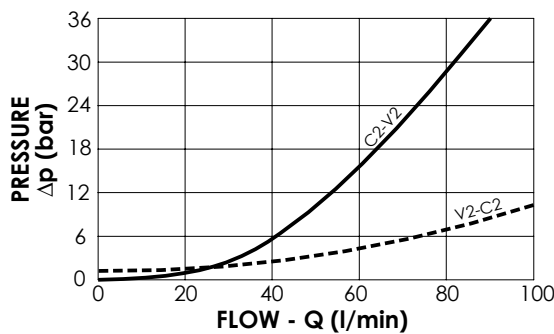
Ordering code:  
PT000243



**NOTES**

Setting: at least 1.3 times the load induced pressure

Designed for DANFOSS motors OMS series.



**ORDERING CODES**

Quick code	Description	Pilot ratio	Main ports size	Standard setting (bar, Q=5 l/min)	Adjust. range (bar)	Pressure increase (bar/turn)
MB000925	MBSN-100-ZMSF-04-G12-N350	4:1	V1, V2: G1/2" C6: G1/8" C1, C2: $\varnothing 19$ D, C3, C4, C5: G1/4"	250	100-350	124