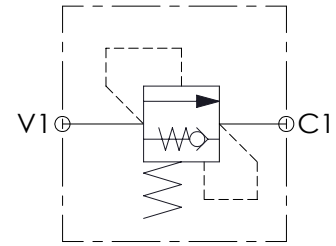
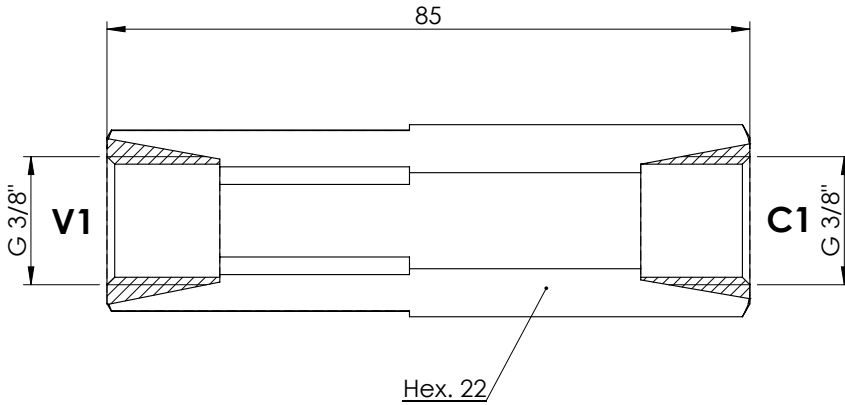
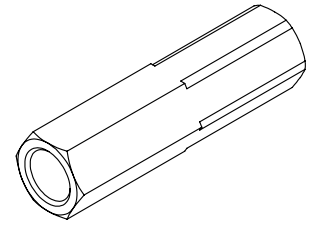


SEQUENCE SLEEVE VALVE

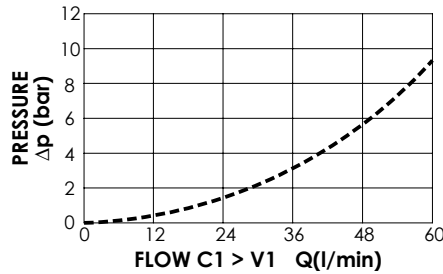
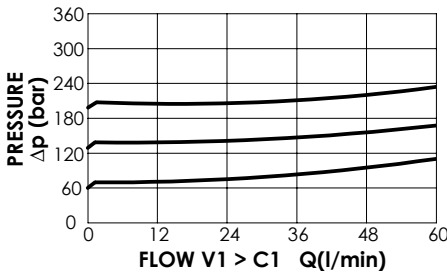
**CPSN-060-DPGD**

**DIRECT ACTING  
WITH ANTI-CAVITATION  
POPPET TYPE**



**SPECIFICATIONS**

Max. operating pressure:	350 bar
Rated flow:	60 l/min
Ports:	G 3/8"
Weight:	0.19 kg
Leakage:	1 cm <sup>3</sup> /min to 80% of nominal set point
Manifold:	Steel body



**ORDERING CODES**

Quick code	Spring range 20-70 bar setting (Q=1 l/min)	Quick code	Spring range 70-130 bar setting (Q=1 l/min)	Quick code	Spring range 130-210 bar setting (Q=1 l/min)
CP000194	20	CP000203	80	CP000210	140
CP000197	30	CP000204	90	CP000211	150
CP000198	40	CP000205	100	CP000212	160
CP000199	50	CP000206	110	CP000213	170
CP000200	60	CP000207	120	CP000214	180
CP000201	70	CP000208	130	CP000215	190
				CP000216	200
				CP000217	210